

Exercises Data Warehousing

From Operational to Multidimensional Databases

Solutions

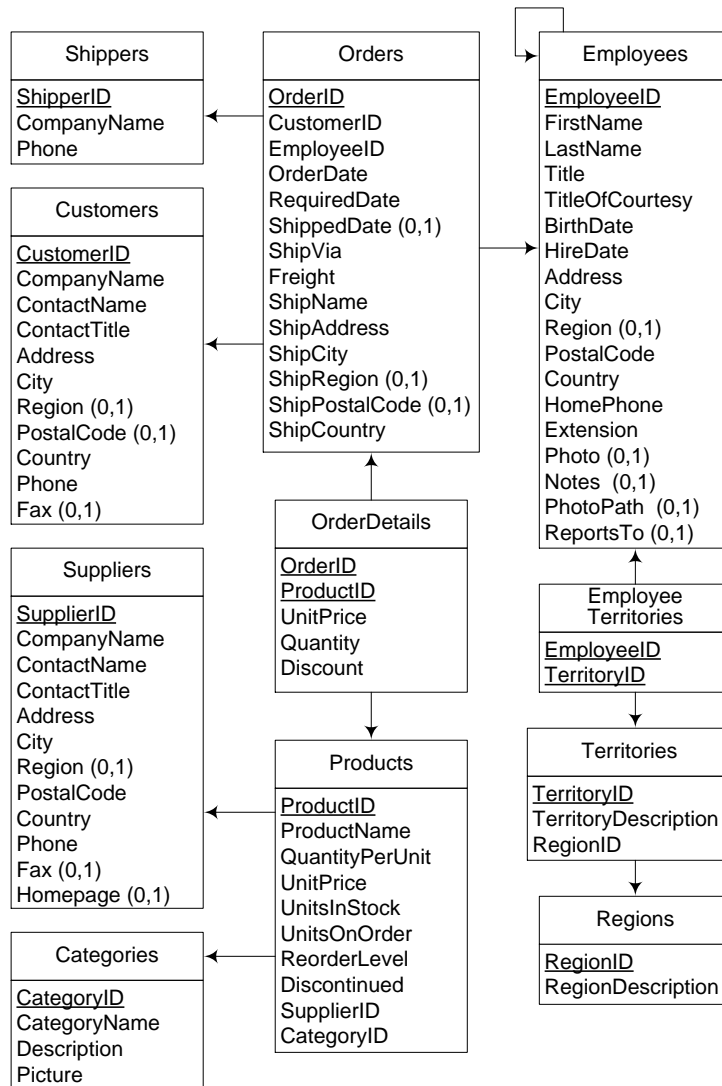


Figure 1: Schema of the Northwind database

Consider the Northwind operational database whose schema is given in Figure 1. This database contains information of orders placed by customers. For every order the detail is given of what products were sold, for what unit price and in what quantity. The employee that secured the order is recorded as well as the date in which the order was inserted. For customers the city they live in etc. is recorded, and for employees their sales district.

For this database, create a data warehouse that will be used for analyzing the sales of the organization. Justify your choices.

One possible conceptual schema for the data warehouse is given in Figure 2 and its relational schema is given in Figure 3.

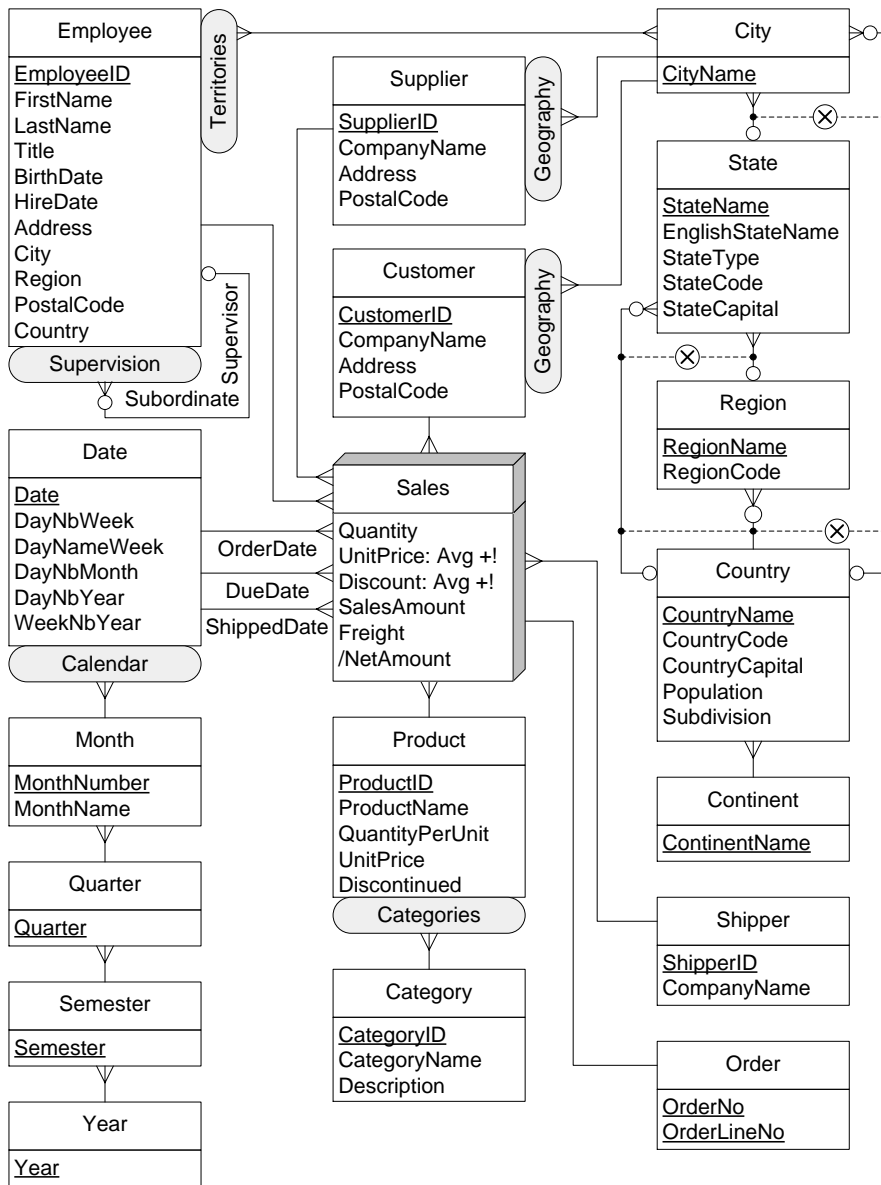


Figure 2: Conceptual schema of the Northwind data warehouse

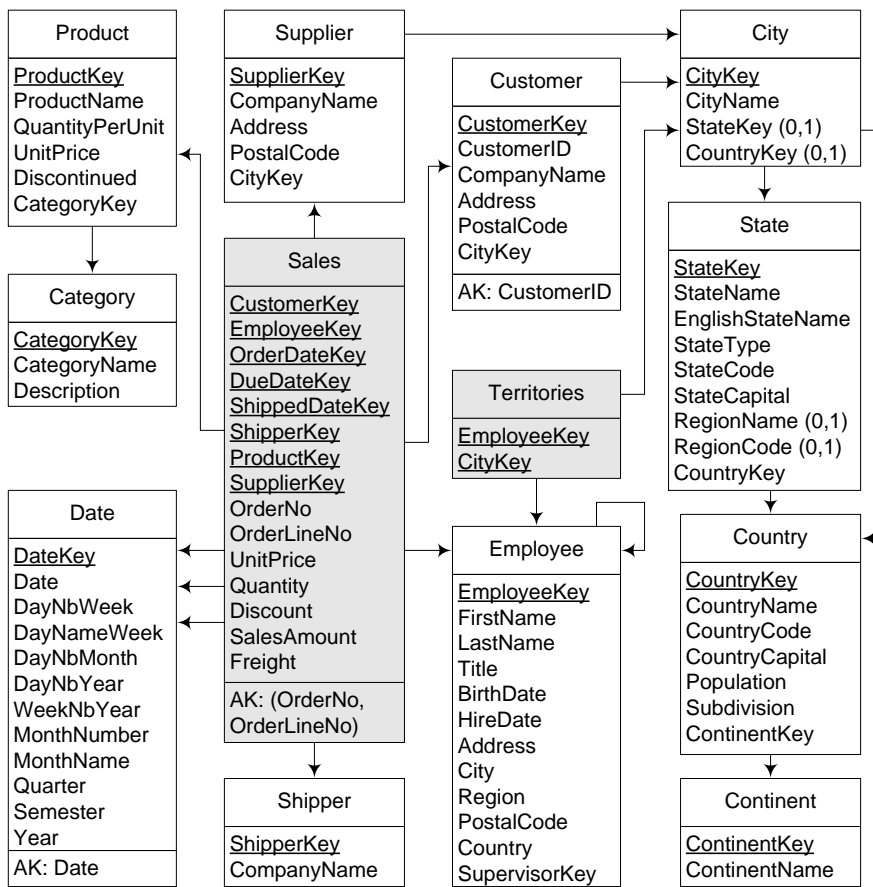


Figure 3: Relational schema of the Northwind data warehouse