

Data Warehouses: What's next?

Esteban ZIMÁNYI **Alejandro VAISMAN**

Department of Computer & Decision Engineering (CoDE)

Université Libre de Bruxelles

{avaisman,ezimanyi}@ulb.ac.be



First European Business Intelligence Summer School (eBISS 2011)

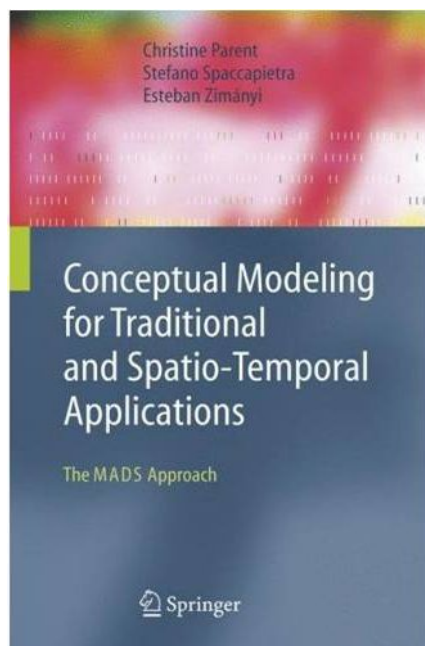
Paris, France, July 4, 2011

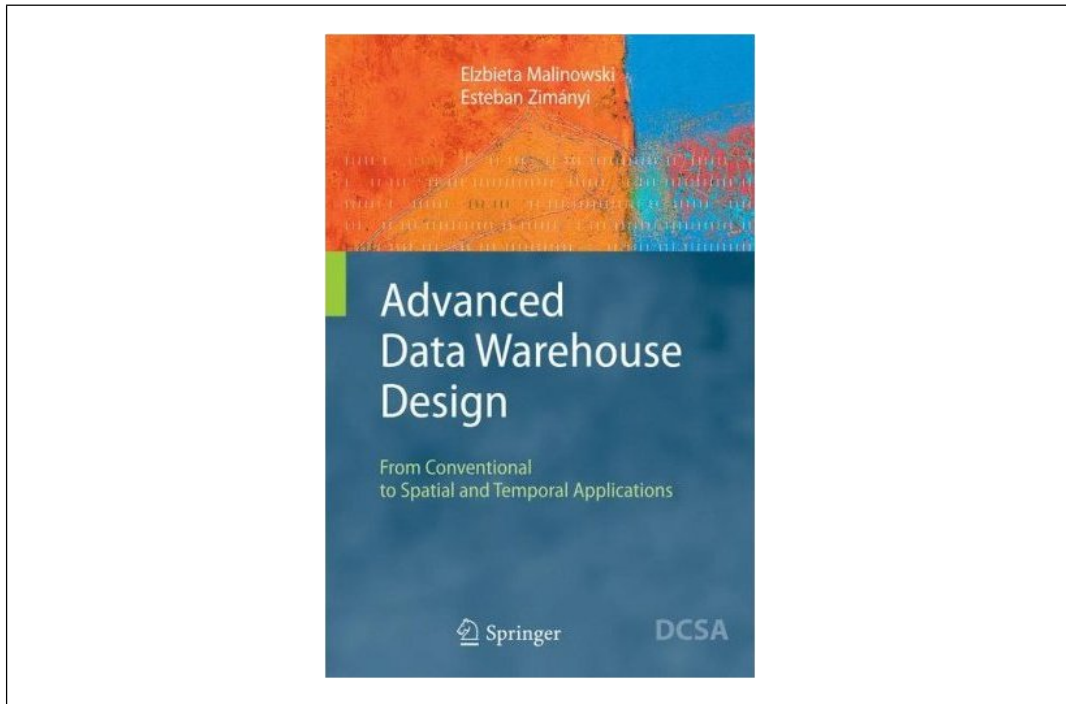
Contents

- ◆ Introduction
- ◆ Spatio-Temporal DW & BI
- ◆ Trajectory DW & Mining
- ◆ DW & BI: New Challenges
- ◆ Real-Time DW
- ◆ DW & BI Over the Semantic Web
- ◆ Conclusion

Goals of this Lecture

- ◆ Review basic DW & OLAP concepts
- ◆ Thorough overview
 - Spatial / Spatio-Temporal BI: quite mature fields
- ◆ Discussion
 - Where we are now?
 - Where should we go?
- ◆ Quick overview of other topics
 - Real-Time DW
 - Semantic Web DW
 - ...





5

Data Warehouses

- ◆ **Operational databases (OLTP)** not suitable for data analysis
 - Contain detailed data
 - Do not include historical data
 - Perform poorly for complex queries due to normalization
- ◆ **Data warehouses (DW)** address requirements of decision-making users
- ◆ They store **huge amounts of data** for performing **analysis** and **business intelligence**
- ◆ A data warehouse is a collection of **subject-oriented, integrated, nonvolatile, and time-varying** data to support data management decisions
- ◆ Data perceived as a **cube**
 - **Dimensions** provide contextual information and cells contain **measures** of facts
 - Dimensions are organized in **hierarchies** to guarantee summarizability
- ◆ A **time** dimension is generally present

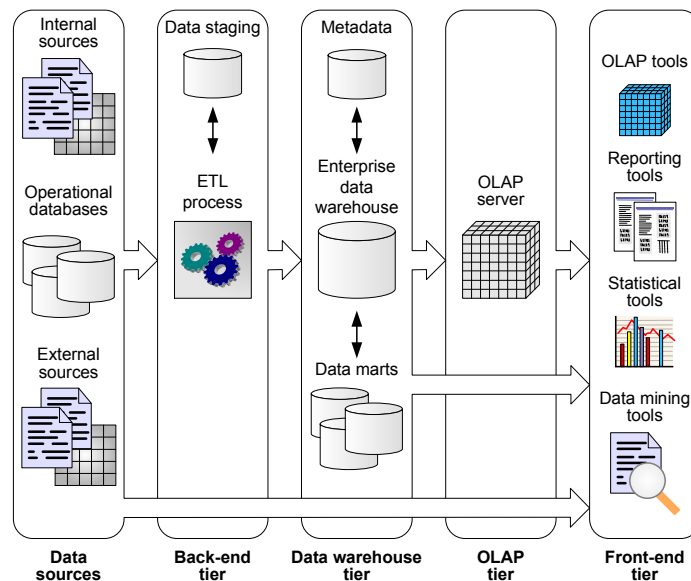
6

OLAP and Data Mining

- ◆ Data warehouses are exploited with **OLAP and data mining tools**
- ◆ **Online analytical processing (OLAP)**: Allows decision-making users to perform interactive analysis of data
- ◆ **Queries are complex**, could be solved with multiple nested group-by SQL operators
- ◆ The result of a query is a **report that accepts dynamic user-interaction**
 - drill-down, roll-up, slice&dice, pivot
- ◆ **Data mining**: the process of **extracting patterns from large data sets** by combining methods from statistics and artificial intelligence with database management
- ◆ Increasingly important tool by modern business to **transform data into business intelligence** giving an informational advantage

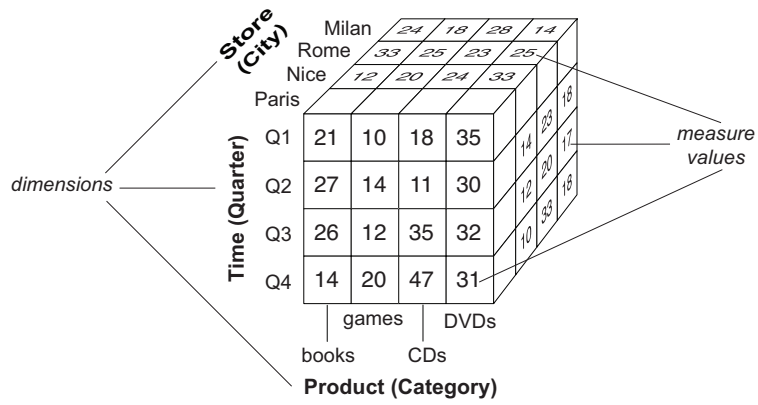
7

Typical Data Warehouse Architecture



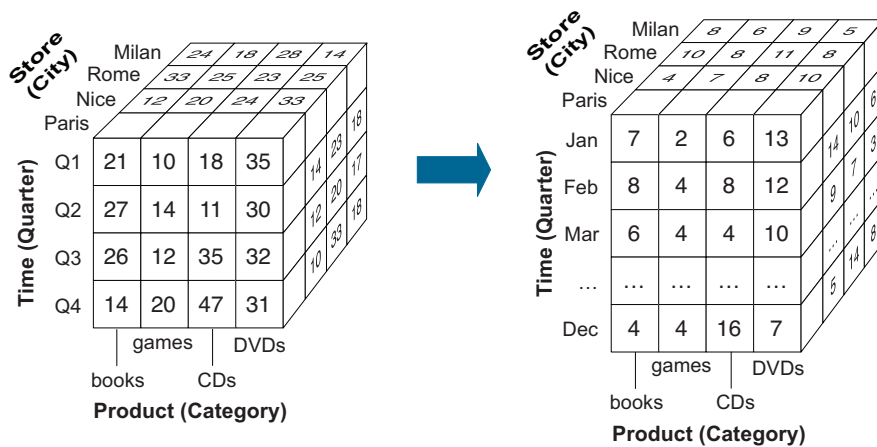
8

Multidimensional View of Data



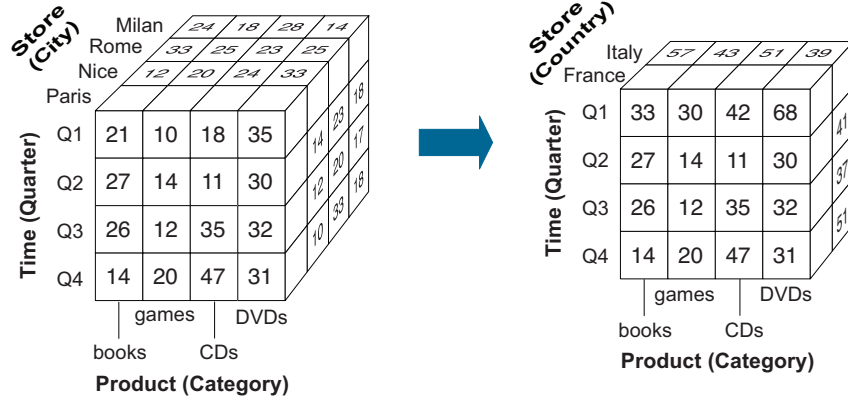
9

OLAP Operations: Drill-Down



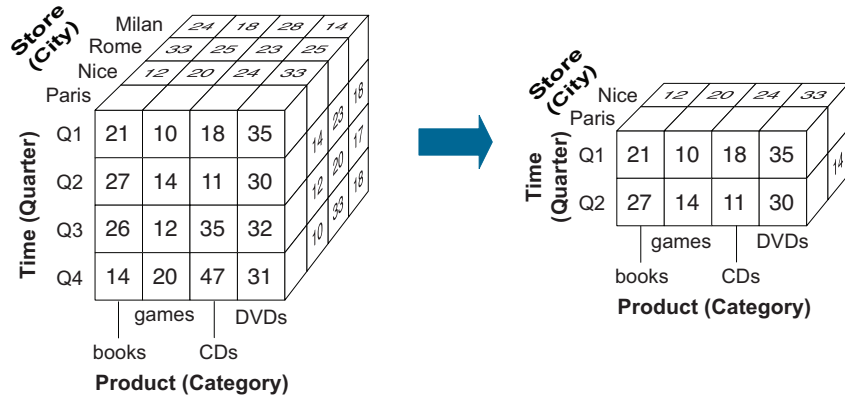
10

OLAP Operations: Roll-Up



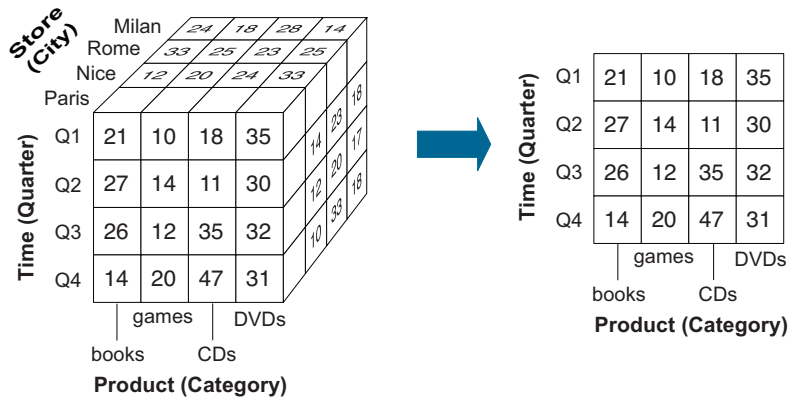
OLAP Operations: Dice

- ◆ Dice on Store.Country='France' and Time.Quarter='Q1' or 'Q2'



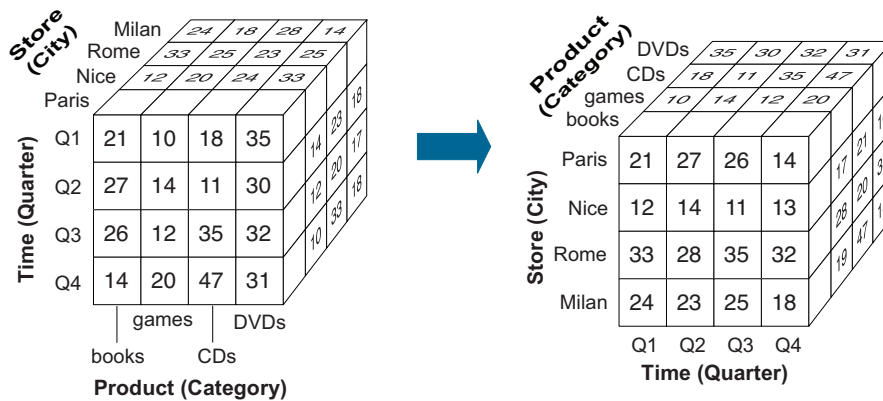
OLAP Operations: Slice

- ◆ Slice on Store.City='Paris'



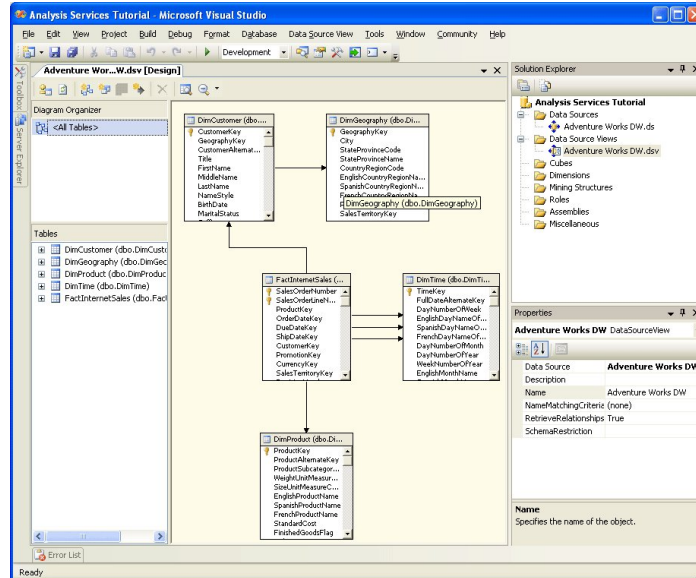
13

OLAP Operations: Pivot



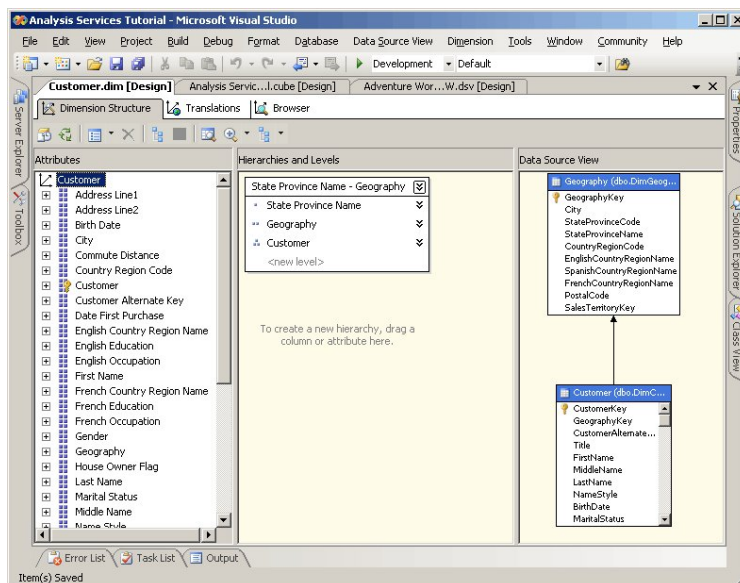
14

Current DW Tools: SQL Server Analysis Services



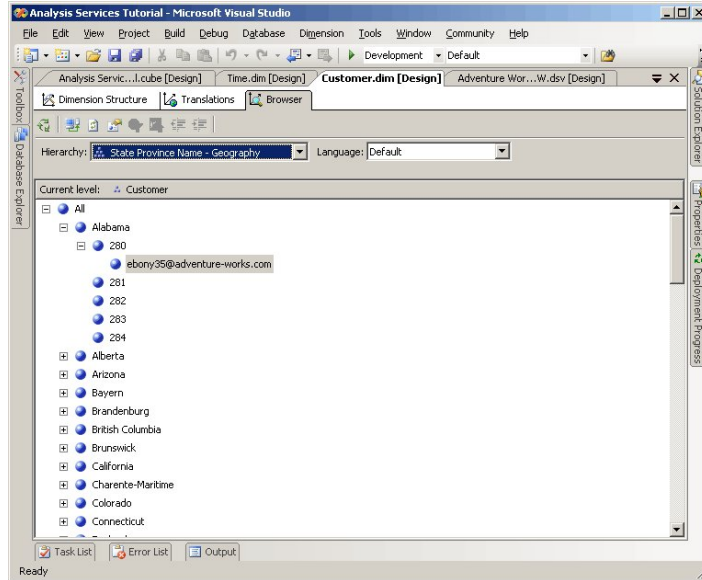
15

Current DW Tools: Hierarchies (1)



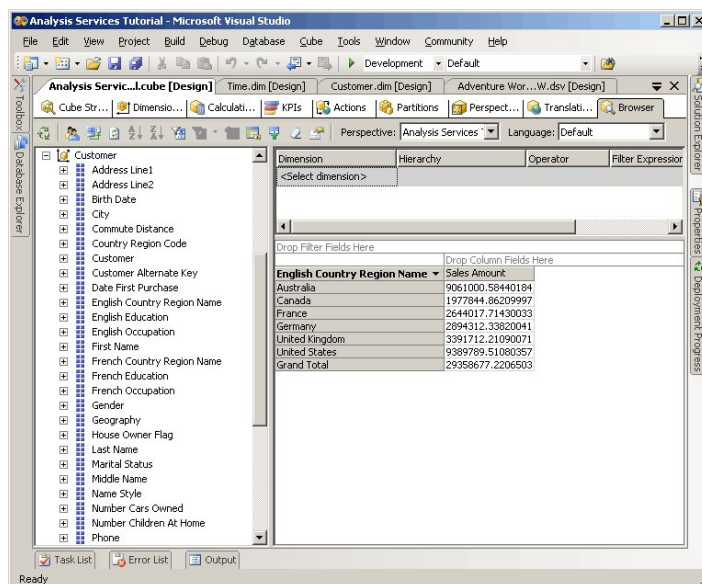
16

Current DW Tools: Hierarchies (2)



17

Current DW Tools: Pivot Tables (1)



18

Current DW Tools: Pivot Tables (2)

Dimension	Hierarchy	Operator	Filter Expression
<Select dimension>			

Drop Filter Fields Here					
	Product Line ▾				
	M	R	S	T	Grand Total
English Country Region Name ▾	Sales Amount	Sales Amount	Sales Amount	Sales Amount	Sales Amount
Australia	2906994.44860026	5029120.40580059	127128.610000006	997757.119999987	9061000.58440184
Canada	672429.314399978	948943.347699987	82736.070000001	273736.129999999	1977844.86209997
France	917158.25079999	1323295.80349999	55001.2099999995	348562.449999998	2644017.71430033
Germany	1021094.32899999	1390063.24919999	54382.2899999995	428772.469999998	2894312.33820041
United Kingdom	1185550.40659999	1610247.3643	67636.3299999989	528278.109999997	3391712.21090071
United States	3547956.77500056	4322438.40580076	217168.789999988	1302225.53999999	9389789.51080357
Grand Total	10251183.5244008	14624108.5763013	604053.299999992	3879331.81999997	29358677.2206503

Current DW Tools: Key Performance Indications

The screenshot shows the Microsoft Visual Studio Analysis Services Tutorial interface. The top part displays a PivotTable with the following data:

Dimension	Hierarchy	Operator	Filter Expression
Sales Territory	Sales Territories	Equal	{ North America }
Date	Calendar Time	Equal	{ Q3 CY 2003 }
Product	Category	Equal	{ Bikes }
<Select dimension>			

The bottom part of the screenshot shows a 'Display Structure' table with the following data:

Display Structure	Value	Goal	Status	Trend	Weight
Product Gross Profit Margin	-2.11%	0.12		→	
Reseller Revenue	\$5,906,595.26	\$12,048,750.00		→	

Current DW Tools: Reports



21

Contents

- ◆ Introduction
- **Spatio-Temporal DW & BI**
 - Geographic Information Systems
 - Characterizing Spatio-Temporal OLAP
 - OLAP over Continuous Fields
- ◆ Trajectory DW & Mining
- ◆ DW & BI: New Challenges
- ◆ Real-Time DW
- ◆ DW & BI Over the Semantic Web
- ◆ Conclusion

22

Spatio-Temporal Data Warehousing & OLAP

- ◆ DW widely investigated for **conventional, non-spatial data**
- ◆ Research on spatial data warehouses after pioneering work by Han et al. [PAKDD, 1998]
- ◆ **Spatial and non-spatial dimensions and measures**
- ◆ OLAP operations in a **spatial data cube**
- ◆ Recent research direction: developing **spatio-temporal DW** and supporting spatio-temporal OLAP operations in order to extract summarized spatio-temporal information
- ◆ **Many applications:** traffic supervision, transportation and supply chain management, mobile e-commerce, . . .
- ◆ Focus on methods for efficient implementation of **spatio-temporal aggregate queries**

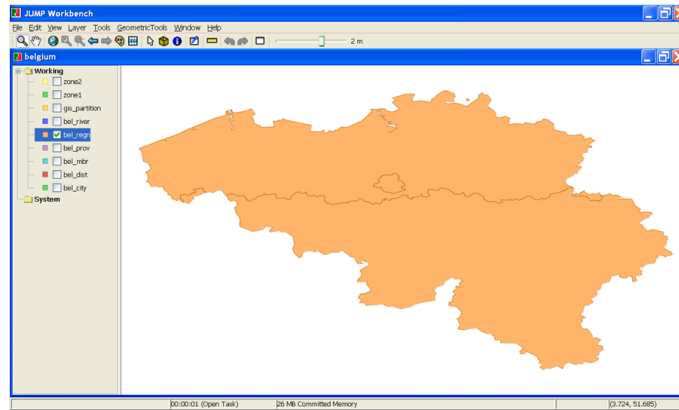
Geographic Information Systems (GIS)

- ◆ Capture, store, manipulate, analyze, manage and present **geographically referenced data**
- ◆ Two main models: **vector** and **raster**
- ◆ **Vector** or **object-based** view: real-world perceived as composed of objects with a an associated geometry
- ◆ **Raster** or **field** view: real-world perceived as a continuous field where a value is associated to each point in space
- ◆ Spatial objects can be annotated with numerical and categorical information.
- ◆ Spatial data organized in **thematic layers**

GIS Example

- ◆ Map of Belgium organized in 5 layers with demographic and economic information

- Regions (polygons)

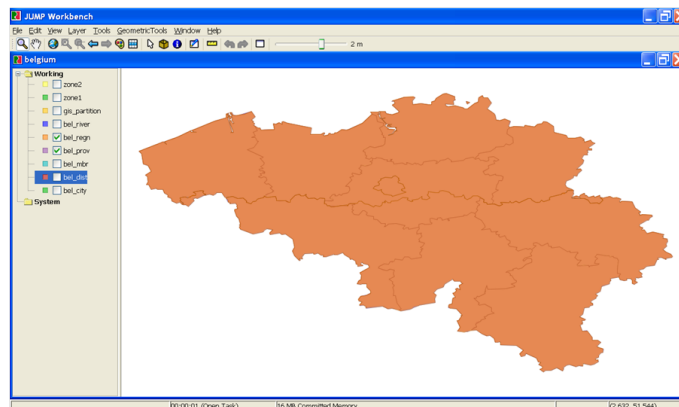


25

GIS Example

- ◆ Map of Belgium organized in 5 layers with demographic and economic information

- Regions (polygons)
- Provinces (polygons)

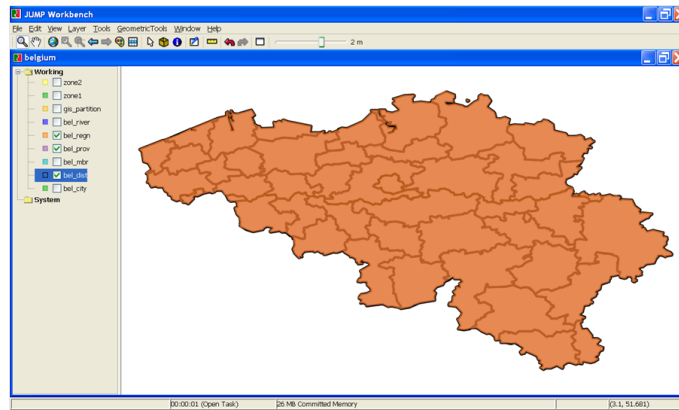


26

GIS Example

- ◆ Map of Belgium organized in 5 layers with demographic and economic information

- Regions (polygons)
- Provinces (polygons)
- Districts (polygons)

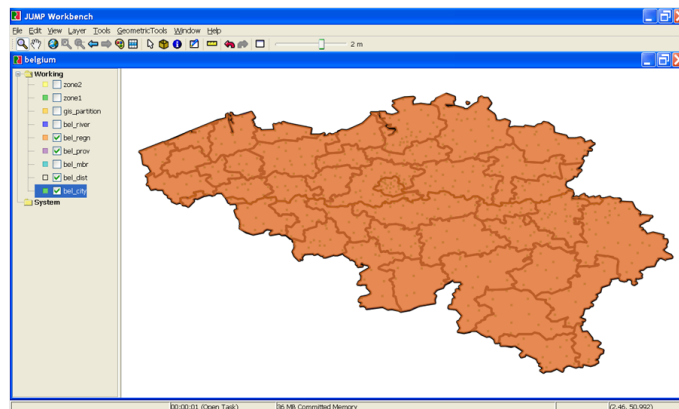


27

GIS Example

- ◆ Map of Belgium organized in 5 layers with demographic and economic information

- Regions (polygons)
- Provinces (polygons)
- Districts (polygons)
- Cities (points)

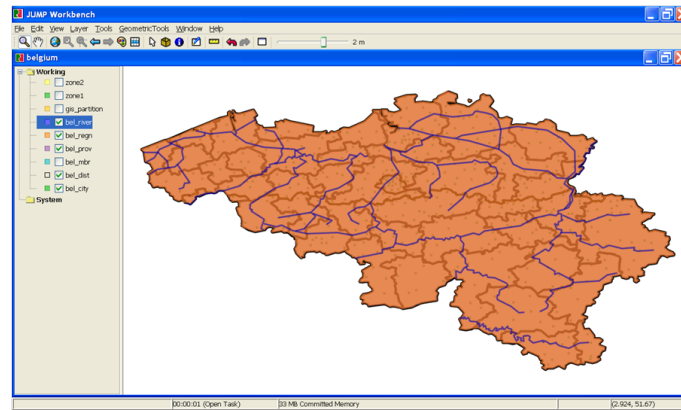


28

GIS Example

- ◆ Map of Belgium organized in 5 layers with demographic and economic information

- Regions (polygons)
- Provinces (polygons)
- Districts (polygons)
- Cities (points)
- Rivers (polylines)

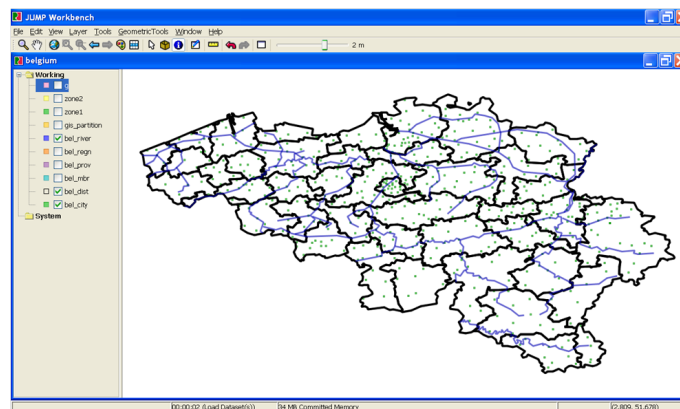


29

GIS Example: Queries

- ◆ Districts and their cities, only for districts crossed by rivers

```
SELECT d.name, c.name
FROM district d, city c, river r
WHERE CONTAINS(d.the_geom, c.the_geom)
AND INTERSECTS(d.the_geom, r.the_geom)
```

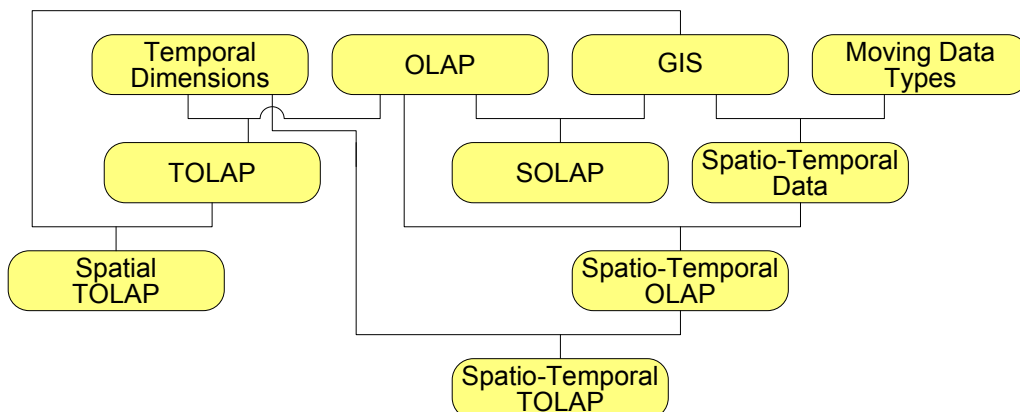


30

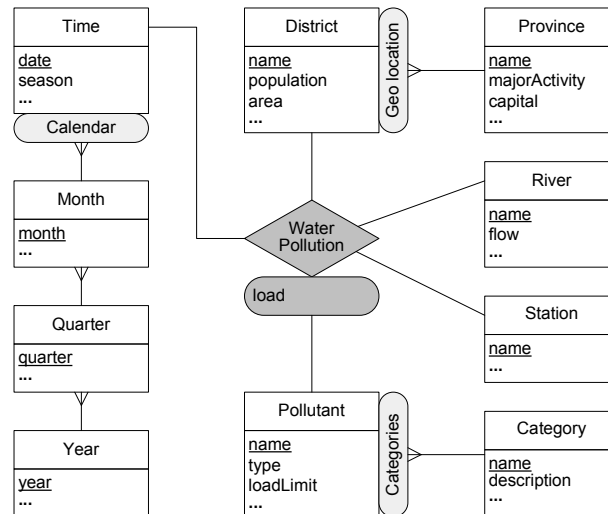
A Classification for Spatio-Temporal DW & OLAP

- ◆ Several proposals aimed at **extending Data Warehouses (DW) and OLAP systems with spatial/temporal features**
- ◆ **No commonly agreed definition** of what a spatio-temporal DW is, and what functionality it should support
- ◆ **Proposed solutions vary considerably** in the kind of data that can be represented and the kinds of queries that can be expressed
- ◆ Vaisman & Zimányi (DaWaK '09) defined
 - a **conceptual framework for spatio-temporal DWs** using an extensible data type system,
 - a **taxonomy of different classes of queries** of increasing expressive power, expressed using an extension of the tuple relational calculus with aggregated functions [Klug'82]
- ◆ Vaisman & Zimányi (ACM GIS '09) extended this framework for **continuous fields**
- ◆ Gómez et al. (DaWaK' 10) proposed an **SQL-like query language** for SOLAP + Fields.

A Taxonomy for Spatio-Temporal Data Warehouses



Conventional Data Warehouses: Example



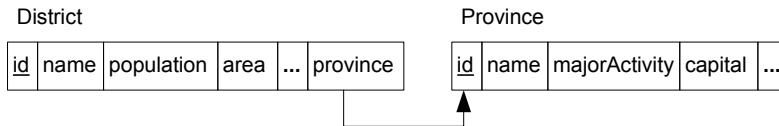
33

Data Types [Güting et al.]

- ◆ **Base types:** int, real, bool, string, id (identifier type)
- ◆ **Time types:** instant, periods
- ◆ **Range constructor:** $\text{range}(\alpha)$ allows to represent finite sets of disjoint, nonadjacent intervals over type α (e.g., int, real, ...)
- ◆ Types have usual interpretation, except that domain is extended by \perp (undefined)
- ◆ Operations on these types are formally defined (see later)

34

Query Language



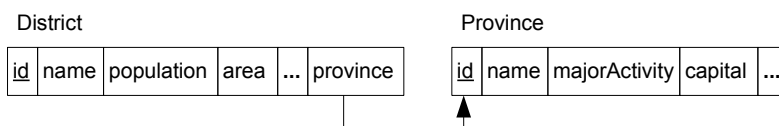
- ◆ Functional SQL-like query language with aggregate functions, variables, nested subqueries
- ◆ **Simple query:** Name and population of districts of the Antwerp province

```
SELECT d.name, d.population
FROM District d, Province p
WHERE d.province=p.id AND p.name='Antwerp'
```
- ◆ **Aggregation query:** Total population of districts of the Antwerp province

```
sum( SELECT d.population FROM District d, Province p
WHERE d.province=p.id AND p.name='Antwerp' )
```
- ◆ As in SQL, the inner query defines a bag (not a set)
- ◆ If two districts have the same population they appear twice in the result to be aggregated

35

Query Language (2)

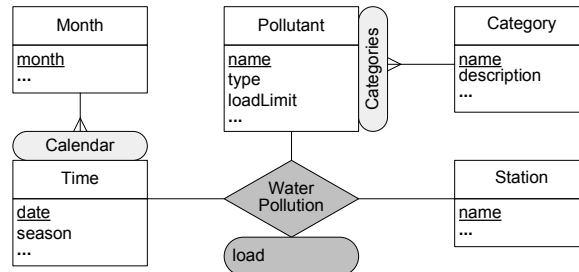


- ◆ **Aggregation query with group filtering:** Total population by province provided that it is greater than 100,000

```
SELECT p.name, totalPop
FROM Province p
WHERE totalPop = sum(
    SELECT d.population FROM District d
    WHERE d.province=p.id )
AND totalPop > 100000
```
- ◆ Corresponds to an SQL query with the **GROUP BY** and **HAVING** clauses

36

OLAP Queries



- ◆ For water stations and polluting agents of organic category give the maximum load by month

```

SELECT s.name, p.name, m.month, maxLoad
FROM Station s, Pollutant p, Month m, Category c
WHERE p.category=c.id AND c.name='Organic'
AND maxLoad= max(
    SELECT w.load FROM WaterPollution w, Time t
    WHERE w.station=s.id AND w.pollutant=p.id AND w.time=t.id
    AND t.month=m.id )
    
```

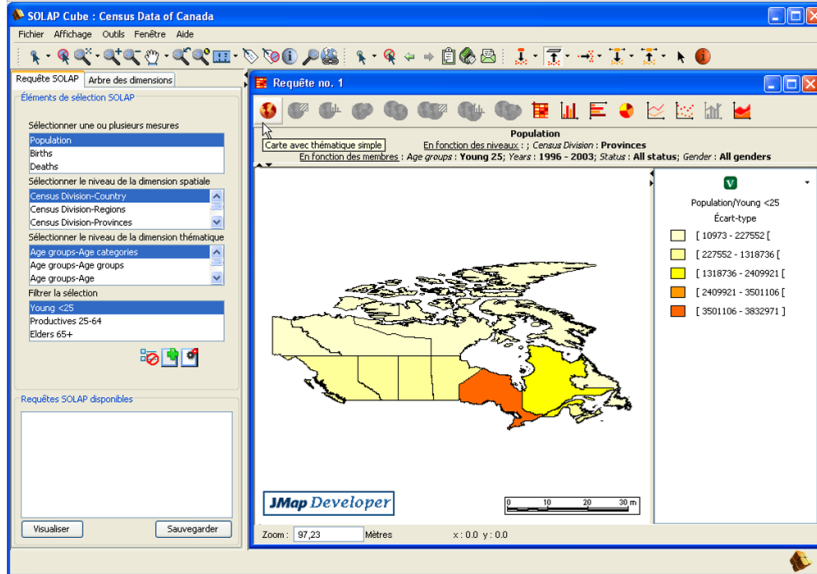
37

Spatial Data Warehouses: Current State

- ◆ Relatively **new field** of research
- ◆ No **formal definition** of SDWs: many different meanings
- ◆ Much research related to **implementation issues**
 - Integration of DWs and GISs
 - Improvement of performance by using indexes
 - Materializations for spatial data cubes
 - ...
- ◆ Some proposals and implementations of **spatial OLAP (SOLAP)**
- ◆ Some research on **conceptual modeling for SDWs**

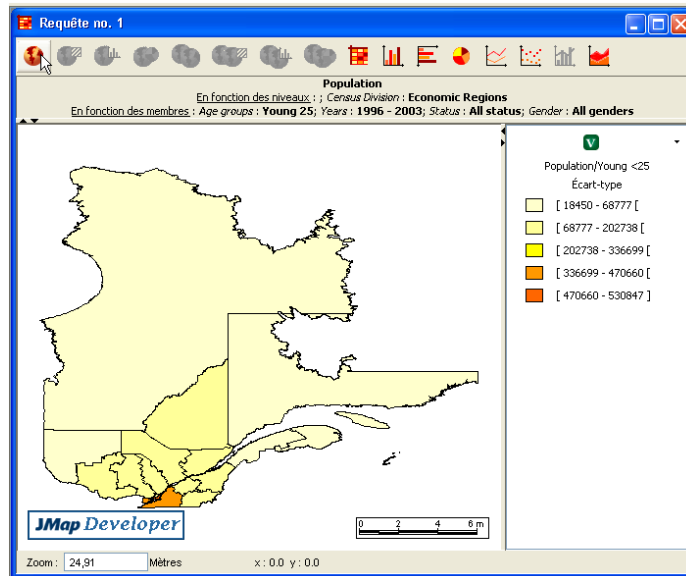
38

Current SDW Tools: JMap



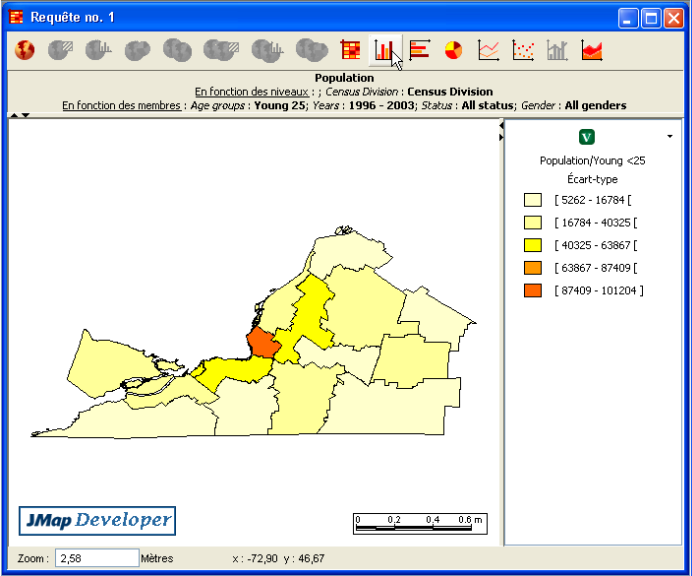
39

Current SDW Tools: Reports



40

Current SDW Tools: Reports



Current SDW Tools: Reports

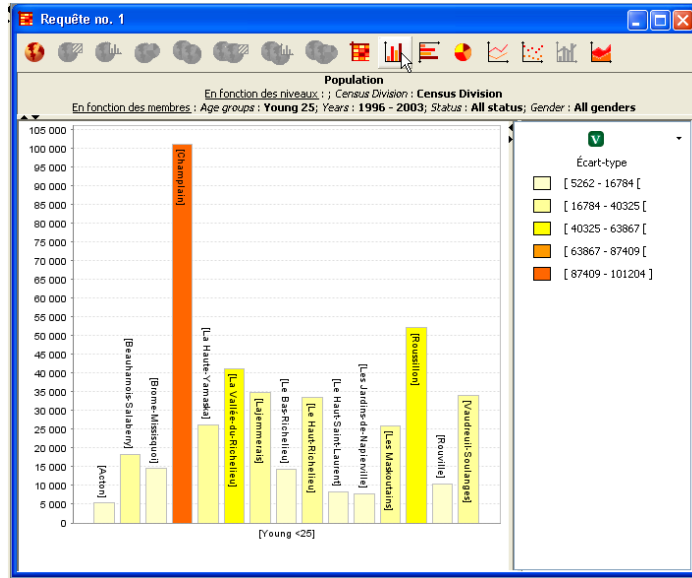
Population
En fonction des niveaux : ; Census Division : **Economic Regions**
En fonction des membres : Age groups : **Young 25**; Years : **1996 - 2003**; Status : **All status**; Gender : **All genders**

	Population
Abitibi - Témiscamingue	52456
Bas-Saint-Laurent	63380
Capitale-Nationale	189885
Centre-du-Québec	72706
Chaudière - Appalaches	127617
Côte-Nord	34123
Estrie	93253
Gaspésie - Îles-de-la-Madeleine	29750
Lanaudière	130773
Laurentides	151148
Laval	108351
Mauricie	76458
Montréal	428320
Montréal	530845
Nord-du-Québec	18450
Outaouais	104805
Saguenay - Lac-Saint-Jean	95644

Population/Young <25
Écart-type

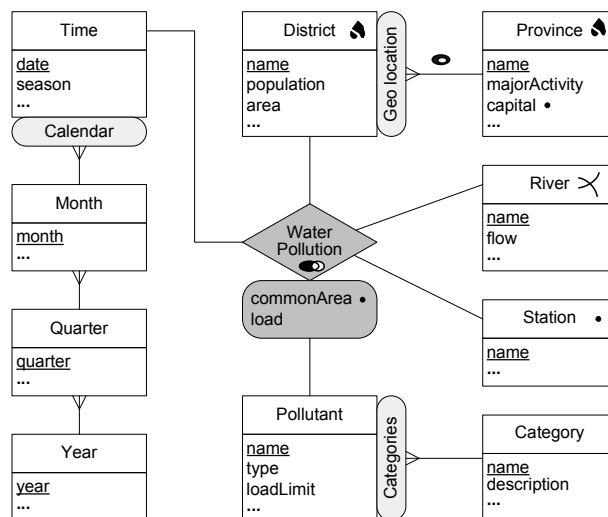
- [18450 - 68777]
- [68777 - 202738]
- [202738 - 336699]
- [336699 - 470660]
- [470660 - 530847]

Current SDW Tools: Reports



43

Spatial Data Warehouses: Example



44

Spatial Types [Güting et al.]

- ◆ Four types: **point**, **points**, **line**, **region**

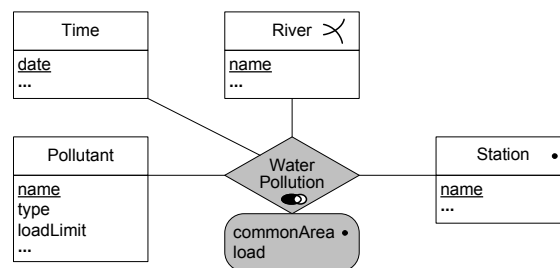


- ◆ Base and spatial types have an associated set of operations

Class	Operations
Predicates	isempty, =, ≠, intersects, inside, <, ≤, ≥, >, before, touches, attached, overlaps, on_border, in_interior
Set Operations	intersection, union, minus, crossings, touch_points, common_border
Aggregation	min, max, avg, center, single
Numeric	no_components, size, duration, length, area, perimeter
Distance and Direction	distance, direction
Base Type Specific	and, or, not

45

Spatial OLAP (SOLAP) Queries



- ◆ For stations located over the Schelde river, give the average content of lead in the last quarter of 2008

```

SELECT s.name, avgLead
FROM Station s, River r, Pollutant p
WHERE r.name='Schelde' AND p.name='Lead'
AND intersects(r.geometry,s.geometry) AND avgLead = avg(
    SELECT w.load FROM WaterPollution w, Time t
    WHERE w.station=s.id AND w.pollutant=p.id AND w.time= t.id
    AND t.date >= 1/10/2008 AND t.date <= 31/12/2008 )
    
```

46

Temporal Information



- ◆ DWs and OLAP tools capture temporal evolution of measures with a Time dimension
 - **Do not allow to keep track of changes in other dimensions**
 - **Existing solutions** (slowly changing dimensions) are **unsatisfactory and ad hoc**
- ◆ **Temporal databases** have been studied for several decades for **managing time-varying information**
- ◆ **Combining this research** with data warehouses leads to **temporal data warehouses**

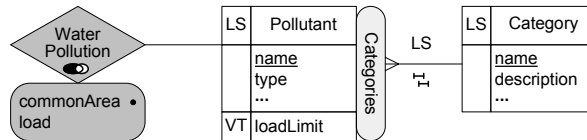
47

Temporal Dimensions in Data Warehouses

- ◆ **Valid time (VT)**: when data is true in modelled reality
 - when a salary was paid for employee
- ◆ **Transaction time (TT)**: when data is true in database
 - when a salary was recorded in database
- ◆ **Bitemporal (BT)**: combine valid and transaction time
- ◆ **Lifespan (LS)**: time during which entity exists
 - when an employee has been hired and fired
- ◆ **DWLT (DW loading time)**: generated in DWs
 - when data about an employee was recorded in the DW
- ◆ **Temporal support for levels, attributes, child-parent relationships, and measures**

48

Temporal Data Warehouses



- ◆ Arise when **evolution of dimension instances** is supported
 - Also referred to as **slowly changing dimensions** [Kimball 96]
- ◆ Represented using **moving types** $\text{moving}(\alpha)$ where α is a **base type**
 - Lifespan of **Pollutant** is of type $\text{moving}(\text{bool})$
 - **loadLimit** of **Pollutant** is of type $\text{moving}(\text{real})$
 - Relationship between **Pollutant** and **Category** is of type $\text{moving}(\text{id})$

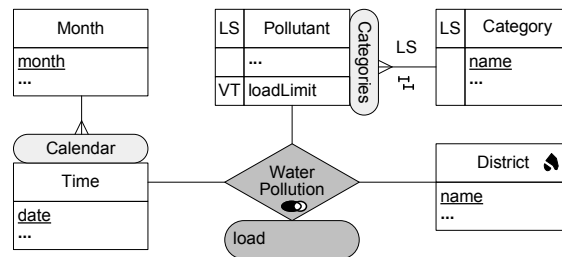
Moving Types [Güting et al.]

- ◆ Capture the evolution over time of base types and spatial types
- ◆ Obtained by applying a constructor $\text{moving}(\alpha)$
 - A value of type $\text{moving}(\text{point})$ is a continuous function $f : \text{instant} \rightarrow \text{point}$
- ◆ Operations on moving types

Class	Operations
Projection to Domain/Range	deftime , rangevalues , locations , trajectory , routes , traversed , inst , val
Interaction with Domain/Range	atinstant , atperiods , initial , final , present , at , atmin , atmax , passes
Rate of change	derivative , speed , turn , velocity
Lifting	(all new operations inferred)

- ◆ **Lifting**: Operations of moving types generalize those of the nontemporal types
 - A **distance** function with signature $\text{moving}(\text{point}) \times \text{moving}(\text{point}) \rightarrow \text{moving}(\text{real})$ calculates the distance between two moving points
- ◆ **Semantics**: result is **computed at each time instant** using the non-lifted operation

Temporal OLAP (TOLAP) Queries



- ◆ For each district and pollutant category, give the average load of water pollution by month

```

SELECT d.name, c.name, m.month, avgLoad
FROM District d, Category c, Month m
WHERE avgLoad = avg(
    SELECT w.load FROM WaterPollution w, Time t, Pollutant p
    WHERE w.district=d.id AND w.time=t.id AND t.month=m.id
    AND w.pollutant=p.id
    AND val(initial(atperiods(p.category,t)))=c.id )
    
```

51

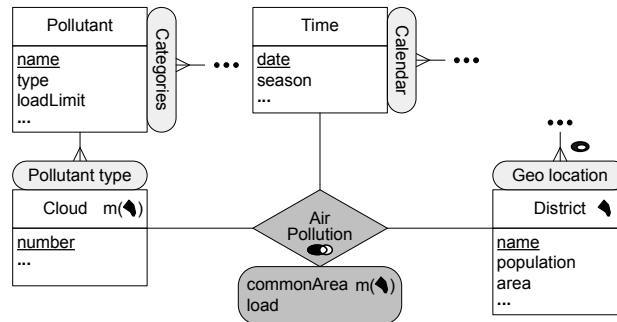
Spatio-Temporal Processes

- ◆ Evolution of **spatial attributes** of objects
 - Movements, shape modifications, ...
- ◆ Evolution of **properties of space**
 - Temperature, land occupation, ...
- ◆ Evolution of **spatial relationships** linking objects
 - Plane – Storm: far ⇒ near ⇒ inside ...
 - Country – Country: adjacent ⇒ disjoint ⇒ adjacent ...
- ◆ **Generation / transition** of (spatial) objects
 - Splitting or merging parcels, countries, ...
- ◆ **Transmission of properties**
 - Disease, innovation, fashion, ...

Trajectory data is just a special case of spatio-temporal data

52

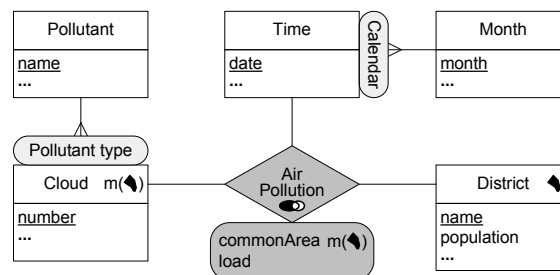
Spatio-Temporal OLAP (ST-OLAP)



- ◆ Arise when **spatial objects evolve over time**
- ◆ Evolution captured by **moving types** $\text{moving}(\alpha)$ where α is a **spatial type**

53

Spatio-Temporal OLAP (ST-OLAP) Queries



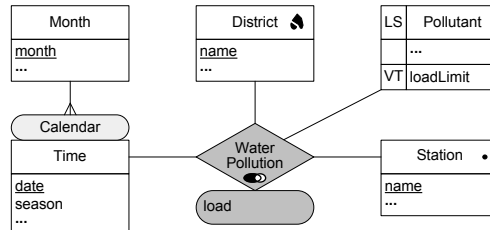
- ◆ For each district, give by month the total number of persons affected by polluting clouds

```

SELECT d.name, m.month, totalNo
FROM District d, Month m
WHERE totalNo = area( union(
    SELECT traversed(p.commonArea) FROM AirPollution p, Time t
    WHERE p.district=d.id AND p.time=t.id AND t.month=m.id ) ) /
    area(d.geometry) * d.population
    
```

54

Spatial TOLAP (S-TOLAP)

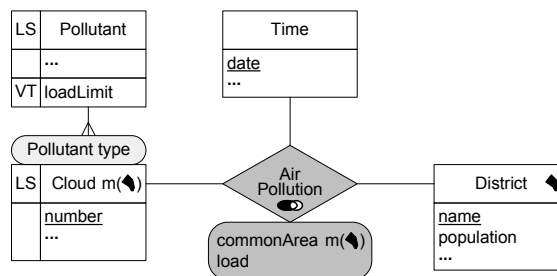


- ◆ Arise when there are **spatial objects/attributes and temporal dimensions**
- ◆ For each month and water station in the district of Namur, give the average load if it is larger than the load limit during the reported month

```

SELECT m.month, s.name, avgLoad
FROM Month m, Station s, District d, Pollutant p
WHERE d.name='Namur' AND inside(s.geometry,d.geometry) AND avgLoad = avg(
  SELECT w.load FROM WaterPollution w, Time t
  WHERE w.station=s.id AND w.time=t.id AND t.month=m.id
  AND w.pollutant=p.id )
AND avgLoad > val(initial(atperiods(p.loadLimit,m.month)))
  
```

Spatio-Temporal TOLAP (ST-TOLAP)



- ◆ **Most general case:** there are **moving geometries and temporal dimensions**
- ◆ Number of days when the Ghent district was under at least one cloud of carbon monoxide (CO) whose load is larger than the load limit at the time when the cloud appeared

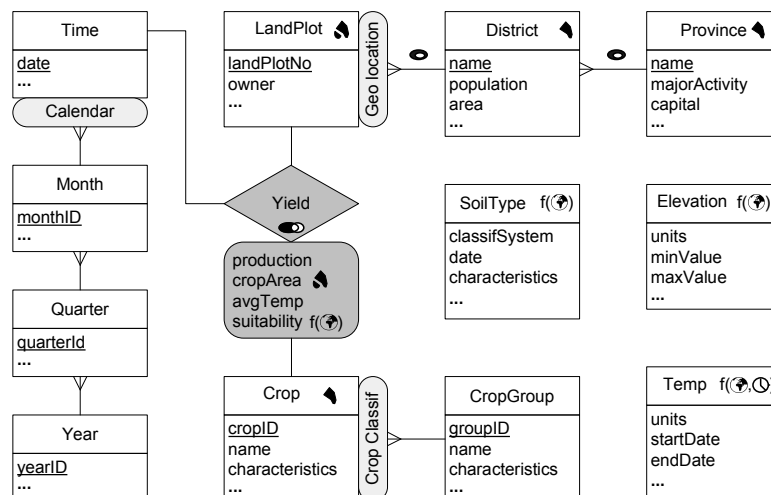
```

duration(union(
  SELECT t.date
  FROM Time t, AirPollution p, District d, Cloud c, Pollutant l
  WHERE p.time=t.id AND p.district=d.id AND d.name='Ghent'
  AND p.cloud=c.id AND c.pollutant=l.id AND l.name='CO' AND p.load >
  val(atinstant(l.loadLimit,inst(initial(at(c.lifespan,true))))))
  ))
  
```

Supporting Continuous Fields

- ◆ Describe **physical phenomena that change continuously in time and/or space**
 - temperature, pressure, land elevation, . . .
- ◆ Formally, a field is composed of :
 - (1) a domain \mathcal{D} , which is a continuous set
 - (2) a range of values \mathcal{R}
 - (3) a mapping function f from \mathcal{D} to \mathcal{R}
- ◆ Multidimensional analysis of continuous data still open
- ◆ We defined the **field** data type, extending the type system of Güting et al.

Spatial Data Warehouses with Continuous Fields



Modeling Continuous Fields

- ◆ **Non-temporal** field levels and measures identified by $f(\text{point})$
- ◆ **Temporal** field levels identified by $f(\text{point}, \text{time})$
- ◆ Field levels have a **geometry** attribute of type $\text{field}(\alpha)$ or $\text{moving}(\text{field}(\alpha))$
- ◆ Field dimensions are **not connected to a fact relationship** (unlike other DW models)
- ◆ **Field measures** are represented by a field data type
 - **suitability** measure could be precomputed as a function of many factors: e.g., soil type, soil pH level, and temperature
- ◆ Traditional numerical measures can be calculated from field data
 - **avgTemp** keeps the average temperature (a real value) of each instance of the fact relationship, is computed from dimensions **Temperature**, **LandPlot**, and **Time**

Field Types [Vaisman & Zimányi]

- ◆ Capture the variation in space of base types
- ◆ Obtained applying a constructor $\text{field}(\alpha)$
 - A value of type $\text{field}(\text{real})$ (e.g., altitude) is a continuous function $f : \text{point} \rightarrow \text{real}$
- ◆ Operations on field types

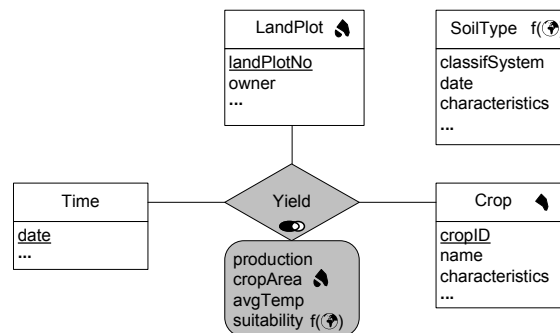
Class	Operations
Projection to Domain/Range	defspace , rangevalues , point , val
Interaction with Domain/Range	atpoint , atpoints , atline , atregion , at , atmin , atmax , defined , takes , concave , convex , flex
Lifting	(all new operations inferred)
Rate of change	partialder_x , partialder_y
Aggregation operators	integral , area , surface , favg , fvariance , fstdev
- ◆ **Lifting** applies to fields
 - The $+$ operator with signature $\alpha \times \alpha \rightarrow \alpha$ generalized by allowing any argument to be a field as in $\text{field}(\alpha) \times \text{field}(\alpha) \rightarrow \text{field}(\alpha)$
- ◆ **Semantics**: result is **computed at each point in space** using the non-lifted operation

Operations on Field Types

- ◆ **partialder_x** and **partialder_y**: partial derivatives of the function defining the field with respect to x and y
 - $\frac{\partial f}{\partial x}(x, y) = \lim_{h \rightarrow 0} \frac{f(x+h, y) - f(x, y)}{h}$
- ◆ Basic field aggregation
 - **integral**: $\iint_S f(x, y) dx dy$
 - **area**: $\iint_S dx dy$
 - **surface**: $\iint_S \sqrt{1 + \frac{df^2}{dx^2} + \frac{df^2}{dy^2}} dx dy$
- ◆ Derived operators for fields
 - **favg**: integral/area
 - **fvariance**: $\iint_S \frac{(f(x, y) - \text{favg})^2}{\text{area}} dx dy$
 - **fstdev**: $\sqrt{\text{fvariance}}$

61

SOLAP-CF Queries



- ◆ For land plots having at least 30% of their surface of clay soil, give the average suitability value for wheat on February 1st, 2009


```

SELECT l.number, favg(y.suitability)
FROM LandPlot l, SoilType s, Yield y, Time t, Crop c
WHERE y.landplot=l.id AND y.time=t.id AND t.date=1/2/2009
AND y.crop=c.id AND c.name='Wheat'
AND (area(defspace(atregion(at(s.geometry, 'Clay'), l.geometry)))/
      area(l.geometry)) >= 0.3
      
```

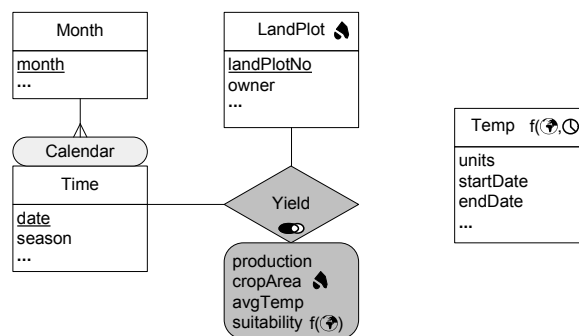
62

Temporal Field Types

- ◆ Model phenomena whose **value change along time and space**:
 - temperature, precipitation, ...
- ◆ Represented by composing the **moving type and the field type constructors**
 - Capture the evolution over time of field types
- ◆ A temporal field over α is defined by **moving(field(α))**
 - **moving(field(real))** defines a continuous function $f : \text{instant} \rightarrow (\text{point} \rightarrow \text{real})$
- ◆ Operators for moving fields as before

63

Spatio-Temporal OLAP with Continuous Fields



- ◆ For each land plot and each month, give a field computing the average temperature of the month at each point in the land plot

```

SELECT l.number, m.month, temp FROM LandPlot l, Month m
WHERE first=min( SELECT t.date FROM Time t WHERE t.month=m.id )
AND last=max( SELECT t.date FROM Time t WHERE t.month=m.id )
AND temp=avg(
  SELECT atperiods(atregion(t.geometry,l.geometry),range(first,last))
  FROM Temp t )
  
```

64

Conclusions

- ◆ **Spatio-temporal DWs** result from **combining GIS, OLAP, and temporal data types**
 - Temporal data types model geometries that evolve over time (moving objects) and evolving (slowly changing) dimensions
 - Field data types model continuous fields that change in space
 - Temporal fields obtained by composing field and temporal data types
- ◆ We defined a **new field data type** and associated operators
- ◆ We extended the **MultiDim conceptual model for data warehouses**
- ◆ We defined a **taxonomy for spatio-temporal OLAP queries** that
 - characterizes features required by spatio-temporal DWs
 - allows to classify different works addressing this issue in the literature

65

Future Work

- ◆ Our framework is at a **conceptual level**: implementation considerations were omitted
- ◆ **From abstract to concrete models**
 - Grid and TIN models for continuous fields
 - Performing efficient OLAP-style navigation of field hierarchies
 - Interpolation of field values across time and space, relating this issue to OLAP
 - ...
- ◆ We are currently **implementing a prototype** based on these ideas
- ◆ Spatio-temporal DWs contain huge amounts of data ⇒ **optimization issues are essential**
 - appropriate index structures, pre-aggregation, efficient query optimization, ...
- ◆ Queries can be expressed in several equivalent ways, but evaluation time of these queries may vary significantly

66

References

- ◆ Anthony C. Klug. Equivalence of Relational Algebra and Relational Calculus Query Languages Having Aggregate Functions. *J. ACM* 29(3): 699-717 (1982)
- ◆ Ralf Hartmut Güting et al. A foundation for representing and querying moving objects. *ACM Trans. Database Syst.* 25(1): 1-42 (2000)
- ◆ Ralf Hartmut Güting, Markus Schneider. *Moving Objects Databases*, Morgan Kaufmann 2005
- ◆ Elzbieta Malinowski, Esteban Zimányi. *Advanced Data Warehouse Design: From Conventional to Spatial and Temporal Applications*. Springer, 2008
- ◆ Alejandro A. Vaisman, Esteban Zimányi. A multidimensional model representing continuous fields in spatial data warehouses. *GIS 2009*: 168-177
- ◆ Alejandro A. Vaisman, Esteban Zimányi. What Is Spatio-Temporal Data Warehousing? *DaWaK 2009*: 9-23
- ◆ Leticia I. Gómez, Alejandro A. Vaisman, Esteban Zimányi. Physical Design and Implementation of Spatial Data Warehouses Supporting Continuous Fields. *DaWaK 2010*: 25-39

Contents

- ◆ Introduction
- ◆ Spatio-Temporal DW & BI
- ➔ **Trajectory DW & Mining**
- ◆ DW & BI: New Challenges
- ◆ Real-Time DW
- ◆ DW & BI Over the Semantic Web
- ◆ Conclusion