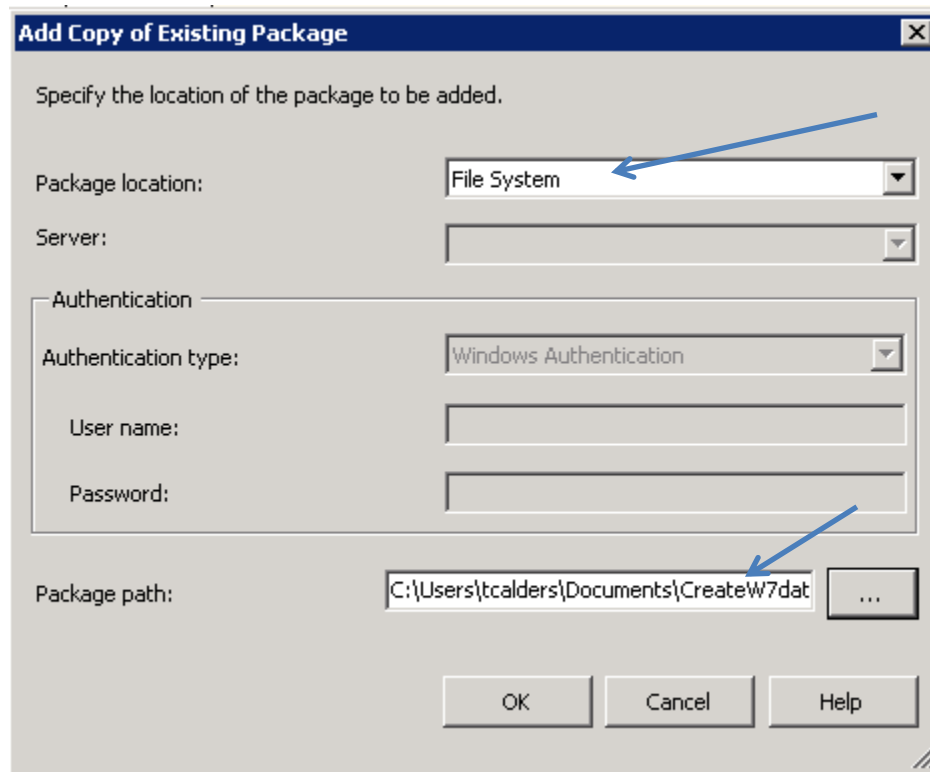
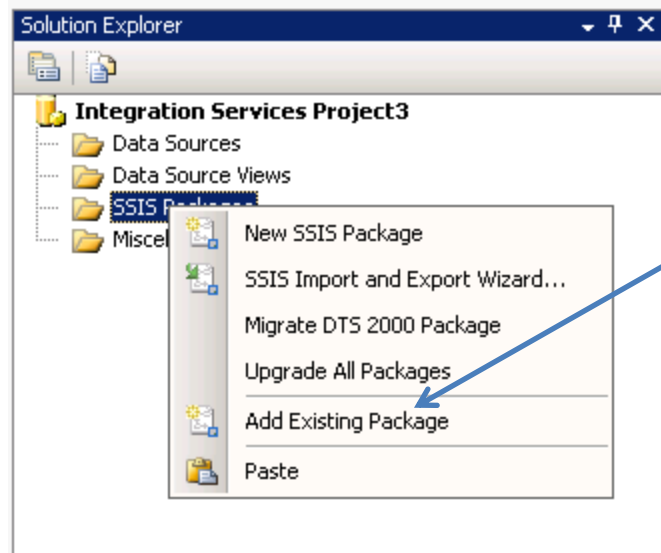


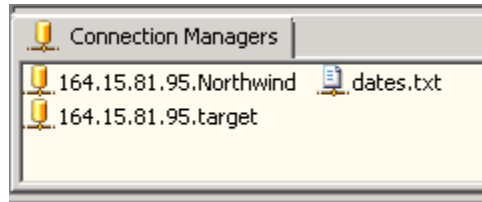
SSIS Exercise – Complete workflow

On this week's course webpage you find an SSIS package named "CreateW7database-students.dtsx". This package is part of the package that was used to create the W9-Warehouse database on the SQL Server, and it is based upon data from the Northwind operational database. Perform now the following steps:

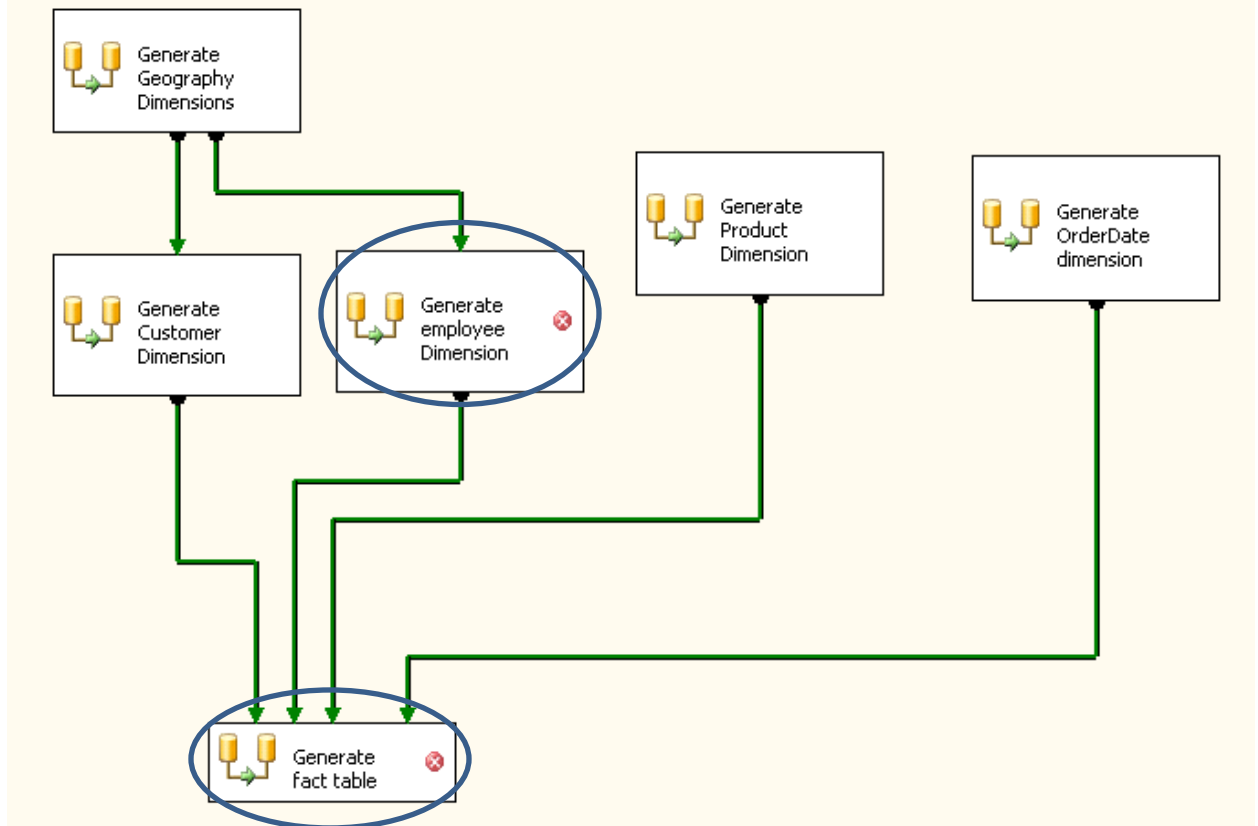
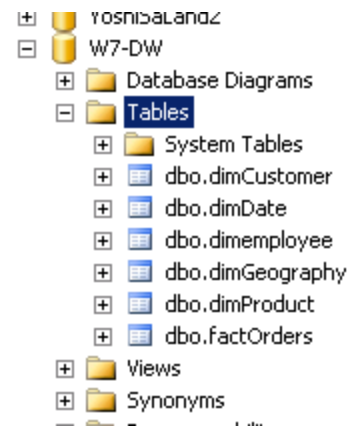
1. Create your own, empty, target database (or, preferable reuse the one you created for the previous exercise). The create table statements that construct the dimensional and fact tables can be found on the course website.
2. Create a new SSIS project and import the package:



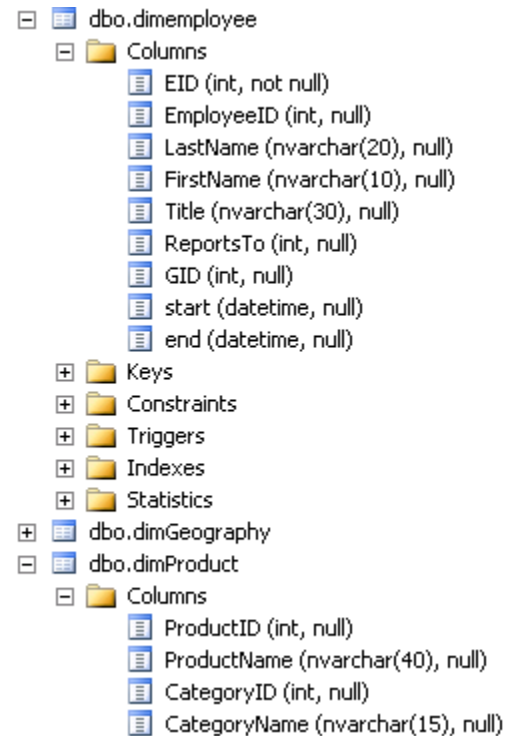
- Update the connection managers such that the output of executing the package is written to your own database. The other file you need, e.g., dates.txt file is in the package on the course webpage. Download the file to your favorite location and update the connection manager.



- The package assumes that all tables to which the data has to be written already exists. Therefore, in SQL Server management studio, create the tables in your destination datawarehouse. You can find the create table statements in a file in the package on the course webpage.
- Complete the package; you still have to complete the definition of two of the data flow tasks:



The employee dimension is built in the same way as the customer dimension, but is based on the Employees table. Notice that the employees dimension needs to be able to deal with type-2 changes. Changes to the products dimension are treated as type-1 changes only. The snippet from SQL Management Studio on the right shows the target schemas of these two dimension tables. You can also consult the W9-Warehouse database on the server to see what the final result should be like.



6. Run the integration services package to create your own copy of the database.
Make sure you are working on your own database!